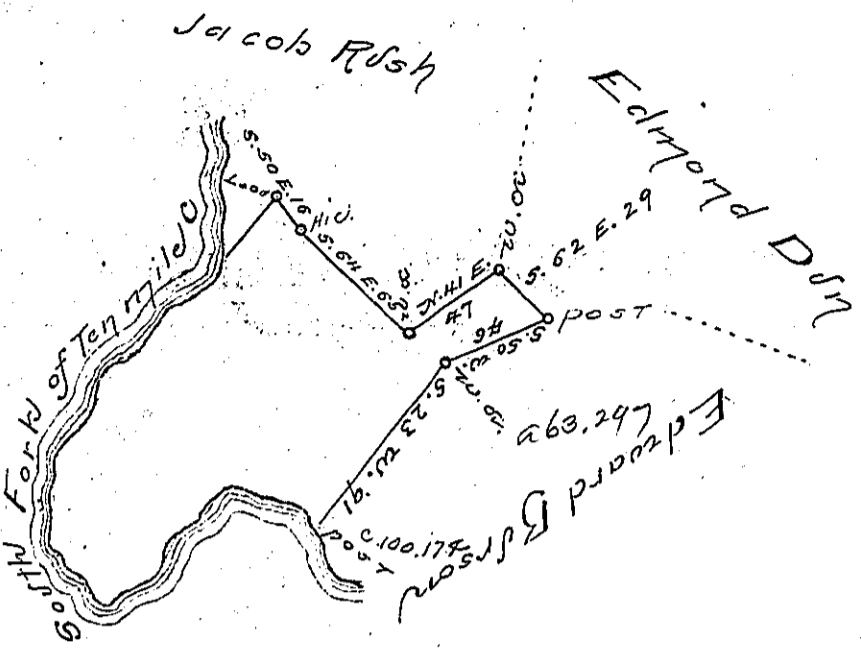


Course & Dist. down Creek
 N. 37 W. 8 P
 West 30 do.
 S. 34 W. 75
 N. 66 W. 41
 N. 10 W. 42
 N. 27 E. 144 to Corner of
 Jacob Rosh Mark^t. Post.



The above is a Draught of a Tract of Land
 Situate on the South Fork of Ten Mile Creek in
 Washington County.

Surveyd. August 22. 1786 in pursuance
 of a Warrant granted to Mathias Reiferty
 Dated June the 17th 1786 Called Dragon
 Containing 96 acres with the usual allowance
 of 6 P. Cent for Roads &c.

John Lukeus Esq. J. G. L. John H. Redick
 for
 David Redick & Co.

IN TESTIMONY that the above is a copy of the original remaining on file in the
 Department of Internal Affairs of Pennsylvania, made con-
 formably to an Act of Assembly approved the 16th day of
 February, 1833, I have hereunto set my Hand and caused
 the Seal of said Department to be affixed at Harrisburg, this

fourth day of August 1896.



James W. Patton
 Secretary of Internal Affairs.